



PYC AWNINGS

800-933-6936

Email for pricing sandyp@pycawnings.com



For Estimates - Email sandyp@pycawnings.com

STANDARD ALUMINUM COLLECTION

639A

Commercial Umbrellas



Product No.:
639A

Also Available:
639AT (with push button tilt)

Specifications:	
Size	6½'
Ribs	6, 5 mm steel ribs
Shape	Hexagon
Frame	1.3 mm thick aluminum
Pole Dia	1 3/8" Upper Aluminum Pole
Bottom Pole	1 ½" Lower Attachment Pole
Lift	Pop up
Tilt	None
Weight	12 lbs.
Height	90" / Head clearance 66"

STANDARD ALUMINUM COLLECTION

639A-LG

Commercial Umbrellas



3 White Life Guard Logos

Base is sold separately

Product No.:
639A-LG

Also Available:
639AT-LG (with push button tilt)

Specifications:	
Size	6 1/2'
Ribs	6, 5 mm steel ribs
Shape	Hexagon
Frame	1.3 mm thick aluminum
Pole Dia	1 3/8" Upper Aluminum Pole
Bottom Pole	1 1/2" Lower Attachment Pole
Lift	Pop up
Tilt	None
Weight	12 lbs.
Height	90" / Head clearance 66"

BEACH COLLECTION

BEACH FEATURES

Commercial Umbrellas

844WBWB & 844WBNB



845WBWB & 845WBNB



BEACH COLLECTION

845WBWB

Commercial Umbrellas



Product No.:
845WBWB

Also Available:
845WBNB (No Button Connector
for commercial use)



Specifications:	
Size	7½'
Ribs	5 mm zinc plated steel ribs
Shape	Octagon
Frame	Wooden center pole, pointed bottom pole
Pole Dia	1 ½"
Lift	Pop up
Tilt	None
Weight	18 lbs.
Height	92" / Head clearance 68"

BEACH COLLECTION

844WBWB

Commercial Umbrellas



Product No.:
844WBWB

Also Available:
844WBNB (No Button Connector
for commercial use)

Specifications:

Size	7 ½'
Ribs	8 mm fiberglass ribs
Shape	Octagon
Frame	Wooden center pole, pointed bottom pole
Pole Dia	1 ½"
Lift	Pop up
Tilt	None
Weight	18 lbs.
Height	92" / Head clearance 68"

BEACH COLLECTION

ACCESSORIES



"HAMMERHEAD" Beach Umbrella Anchor



- Featured in Casual Living Magazine as the "Top New Beach Accessory" for 2013
- For sand use only!
 - Pile-drive action provides the easiest & strongest hold of any beach umbrella anchor available. (NO MORE FLYING UMBRELLAS)
 - Installs with one hand in less than 30 seconds by both men and women of all ages.
 - Stabilizing fins provide superior hold in all sand.
 - Reel notch in top secures medium size fishing rods up to 1-1/2" diameter.
 - Built in 2 lb. carbon steel drive-weight with durable powdercoat finish.
 - Large nylon wing screw secures umbrella in place.
 - Built-in locktab secures drive-weight when not in use.
 - Holds umbrella poles from 1-1/8" to 1-1/2" diameter.
 - Dimensions - 27" x 3-3/8".
 - Weight 3 lbs.
 - ALSO DOUBLES AS THE PERFECT SURF ROD ANCHOR FOR STANDARD SIZE FISHING RODS



BB7 - Beach bag w/handle and drawstring to fit 6ft-7½ ft umbrellas. 100% Awning Weight Acrylic.

Fiberglass Features

Top & Bottom Hub. Pin & Chain Assembly



Rib End Tips



Rounded Finial Top



This frame features ribs that snap on individually for easy replacement.

Bottom poles;
Standard 34"
included.
Bar height 44"
available.



Standard
Aluminum
Pole Thickness
1 mm

Our
Aluminum
Pole Thickness
2 mm

FIBERGLASS COLLECTION

EC75FPOP-MKT

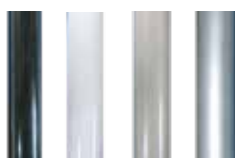
Commercial Umbrellas



Base is sold separately

Product No.:

EC75FPOP-MKT-BLK (Black Frame)
EC75FPOP-MKT-WH (White Frame)
EC75FPOP-MKT-CH (Champagne Frame)
EC75FPOP-MKT-SIL (Silver Frame)



Specifications:

Size	7½'
Ribs	8, 12 mm fiberglass
Shape	Octagon
Pole thickness	2 mm Aluminum
Pole Dia	1.5"
Bottom pole	34" or 44" bar height
Lift	Pop up / SS pin
Tilt	None
Weight	15 lbs.
Height	92" / Head clearance 68"

FIBERGLASS COLLECTION

EC75FCRK-MKT

Commercial Umbrellas



Other Styles:

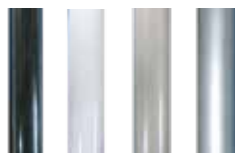
EC75FCRK-STD



Base is sold separately

Product No.:

EC75FCRK-MKT-BLK (Black Frame)
EC75FCRK-MKT-WH (White Frame)
EC75FCRK-MKT-CH (Champagne Frame)
EC75FCRK-MKT-SIL (Silver Frame)



Specifications:

Size	7½'
Ribs	8, 12 mm fiberglass
Shape	Octagon
Pole thickness	2 mm Aluminum
Pole Dia	1.5"
Bottom pole	34" or 44" bar height
Lift	Crank
Tilt	None
Weight	15 lbs.
Height	92" / Head clearance 68"

FIBERGLASS COLLECTION

Commercial Umbrellas

EC75FAUTO-MKT



Other Styles:

EC75FAUTO-STD



Base is sold separately

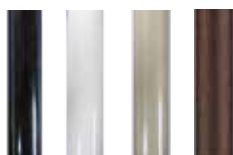
Product No.:

EC75FAUTO-MKT-BLK (Black Frame)

EC75FAUTO-MKT-WH (White Frame)

EC75FAUTO-MKT-CH (Champagne Frame)

EC75FAUTO-MKT-BRZ (Bronze Frame)



Specifications:

Size	7½'
Ribs	8, 12 mm fiberglass
Shape	Octagon
Pole thickness	2 mm Aluminum
Pole Dia	1.5"
Bottom pole	34" or 44" bar height
Lift	Crank
Tilt	Automatic
Weight	15 lbs.
Height	92" / Head clearance 71"

FIBERGLASS COLLECTION

EC75FPOP-STD

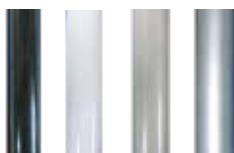
Commercial Umbrellas



Base is sold separately

Product No.:

EC75FPOP-STD-BLK (Black Frame)
EC75FPOP-STD-WH (White Frame)
EC75FPOP-STD-CH (Champagne Frame)
EC75FPOP-STD-SIL (Silver Frame)



Specifications:

Size	7½'
Ribs	8, 12 mm fiberglass
Shape	Octagon
Pole thickness	2 mm Aluminum
Pole Dia	1.5"
Bottom pole	34" or 44" bar height
Lift	Pop up / SS pin
Tilt	None
Weight	15 lbs.
Height	92" / Head clearance 68"

FIBERGLASS COLLECTION

EC9FCRK

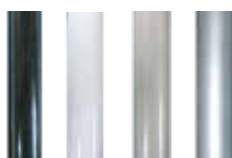
Commercial Umbrellas



Base is sold separately

Product No.:

EC9FCRK-BLK (Black Frame)
EC9FCRK-WH (White Frame)
EC9FCRK-CH (Champagne Frame)
EC9FCRK-SIL (Silver Frame)



Specifications:

Size	9'
Ribs	8, 12 mm fiberglass
Shape	Octagon
Pole thickness	2 mm Aluminum
Pole Dia	1.5"
Bottom pole	34" or 44" bar height
Lift	Crank
Tilt	None
Weight	18 lbs.
Height	92" / Head clearance 77"

FIBERGLASS COLLECTION

EC9FPUL

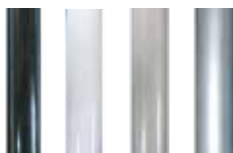
Commercial Umbrellas



Base is sold separately

Product No.:

EC9FPUL-BLK (Black Frame)
EC9FPUL-WH (White Frame)
EC9FPUL-CH (Champagne Frame)
EC9FPUL-SIL (Silver Frame)



Specifications:

Size	9'
Ribs	8, 12 mm fiberglass
Shape	Octagon
Pole thickness	2 mm Aluminum
Pole Dia	1.5"
Bottom pole	34" or 44" bar height
Lift	Double Pulley
Tilt	None
Weight	18 lbs.
Height	92" / Head clearance 77"

FIBERGLASS COLLECTION

EC9FAUTO

Residential Umbrellas



Base is sold separately

Product No.:

EC9FAUTO-BLK (Black Frame)
EC9FAUTO-WH (White Frame)
EC9FAUTO-CH (Champagne Frame)
EC9FAUTO-SIL (Silver Frame)
EC9FAUTO-BRZ (Bronze Frame)



Specifications:

Size	9'
Ribs	8, 12 mm fiberglass
Shape	Octagon
Pole thickness	2 mm Aluminum
Pole Dia	1.5"
Bottom pole	34" or 44" bar height
Lift	Crank
Tilt	Automatic
Weight	23 lbs.
Height	92" / Head clearance 77"

FIBERGLASS COLLECTION

EC11FPUL

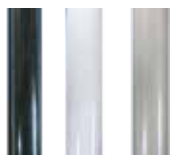
Commercial Umbrellas



Base is sold separately

Product No.:

EC11FPUL-BLK (Black Frame)
EC11FPUL-WH (White Frame)
EC11FPUL-CH (Champagne Frame)



Specifications:

Size	11'
Ribs	8, 12 mm fiberglass
Shape	Octagon
Pole thickness	2 mm Aluminum
Pole Dia	1.5"
Bottom pole	34" or 44" bar height
Lift	Double Pulley Lift
Tilt	None
Weight	28 lbs.
Height	114" / Head clearance 96"

FIBERGLASS COLLECTION

EC11FAUTO-MKT

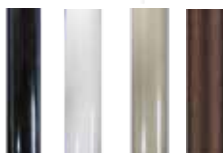
Commercial Umbrellas



Base is sold separately

Product No.:

EC11FAUTO-BLK (Black Frame)
EC11FAUTO-WH (White Frame)
EC11FAUTO-CH (Champagne Frame)
EC11FAUTO-BRZ (Bronze Frame)



Specifications:

Size	11'
Ribs	8, 12 mm fiberglass
Shape	Octagon
Pole thickness	2 mm Aluminum
Pole Dia	1.5"
Bottom pole	34" or 44" bar height
Lift	Crank
Tilt	Automatic
Weight	28 lbs.
Height	114" / Head clearance 96"

Square vs. Round



5½ft Square = 7½ft Octagon



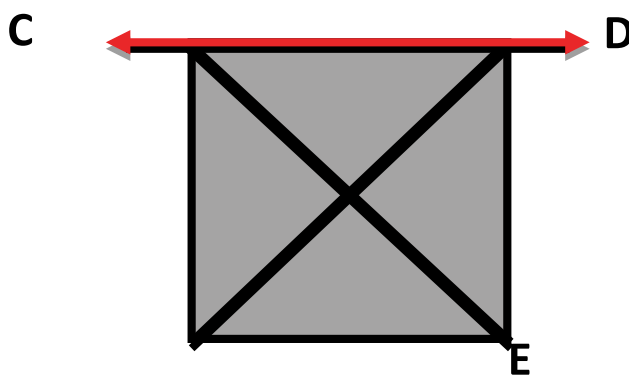
6½ft Square = 9ft Octagon



7½ft Square = 11ft Octagon

How to measure a SQUARE umbrella

A SQUARE (4 rib) umbrella is measured from point C to point D along the edge of the panel.



EXAMPLE: A 5½ft SQUARE (4 rib) would measure approximately 5½ft from point C to point D along the edge of the panel, making it a 5½ft umbrella, but measures 7½ft from point C to point E along the ribs.

FIBERGLASS COLLECTION

EC55FPOP-SQU

Commercial Umbrellas



Base is sold separately

Product No.:

EC55FPOP-SQU-BLK (Black Frame)

EC55FPOP-SQU-WH (White Frame)

EC55FPOP-SQU-CH (Champagne Frame)

EC55FPOP-SQU-SIL (Silver Frame)



Available Also:

With Crank: **EC55FCRK-SQU**

With Crank & AutoTilt: **EC55FAUTO-SQU** (Residential Umbrella)

Specifications:

Size 5 1/2' (equivalent to a 7 1/2' octagon)

Ribs 4, 12 mm fiberglass

Shape Square

Pole thickness 2 mm Aluminum

Pole Dia 1.5"

Bottom pole 34" or 44" bar height

Lift Pop up / SS pin

Tilt None

Weight 15 lbs.

Height 92" / Head clearance 71"

FIBERGLASS COLLECTION

EC65FPULSQU

Commercial Umbrellas



Base is sold separately

Product No.:

EC65FPUL-SQU-BLK (Black Frame)

EC65FPUL-SQU-WH (White Frame)

EC65FPUL-SQU-CH (Champagne Frame)

EC65FPUL-SQU-SIL (Silver Frame)



Available Also:

With Crank : **EC65FCRK-SQU**

With Crank & AutoTilt: **EC65FAUTO-SQU** (Residential Umbrella)

Specifications:

Size	6 1/2' (equivalent to a 9' octagon)
Ribs	4, 12 mm fiberglass
Shape	Square
Pole thickness	2 mm Aluminum
Pole Dia	1.5"
Bottom pole	34" or 44" bar height
Lift	Double Pulley / SS pin
Tilt	None
Weight	15 lbs.
Height	92" / Head clearance 81"



HEAVY DUTY FIBERGLASS

Features

Top & Bottom Hub. Pin & Chain Assembly



Rib End Tips



Rounded Finial Top



Bottom poles;
Standard 34"
included.
Bar height 44"
available.



This frame features metal end clips for increased durability. They easily snap on for individual replacement.



Standard
Aluminum
Pole Thickness
1 mm

Our
Aluminum
Pole Thickness
2 mm

HEAVY DUTY FIBERGLASS



HDF75POP-MKT

Commercial Umbrellas

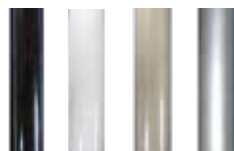


This frame features metal end clips for increased durability. They easily snap on for individual replacement.

Base is sold separately

Product No.:

HDF75POP-MKT-BLK (Black Frame)
HDF75POP-WH (White Frame)
HDF75POP-MKT-SIL (Silver Frame)
HDF75POP-MKT-CH (Champagne Frame)



Available Also:

HDF55POP-SQU



Specifications:

Size	7 1/2'
Ribs	8, 12 mm fiberglass
Shape	Octagon
Pole thickness	2 mm Aluminum
Pole Dia	1.5"
Bottom pole	34" or 44" bar height
Lift	Pop up / SS pin
Tilt	None
Weight	15 lbs.
Height	92" / Head clearance 68"



HEAVY DUTY FIBERGLASS

HDF75POP-STD

Commercial Umbrellas



This frame features metal end clips for increased durability. They easily snap on for individual replacement.

Base is sold separately

Product No.:

HDF75POP-STD-BLK (Black Frame)

HDF75POP-STD-WH (White Frame)

HDF75POP-STD-SIL (Silver Frame)

HDF75POP-STD-CH (Champagne Frame)



Specifications:

Size	7 1/2'
Ribs	8, 12 mm fiberglass
Shape	Octagon
Pole thickness	2 mm Aluminum
Pole Dia	1.5"
Bottom pole	34" or 44" bar height
Lift	Pop up / SS pin
Tilt	None
Weight	15 lbs.
Height	92" / Head clearance 68"

HEAVY DUTY FIBERGLASS



HDF9PUL

Commercial Umbrellas



This frame features metal end clips for increased durability. They easily snap on for individual replacement.

Base is sold separately

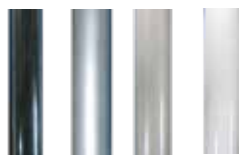
Product No.:

HDF9PUL-BLK (Black Frame)

HDF9PUL-SIL (Silver Frame)

HDF9PUL-CH (Champagne Frame)

HDF9PUL-WH (White Frame)



Available Also:

HDFP65PUL-SQU

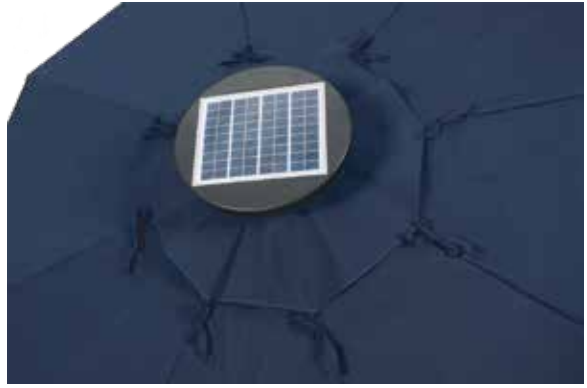


Specifications:

Size	9'
Ribs	8, 12 mm fiberglass
Shape	Octagon
Pole thickness	2 mm Aluminum
Pole Dia	1.5"
Bottom pole	34" or 44" bar height
Lift	Double Pully / SS pin
Tilt	None
Weight	18 lbs.
Height	92" / Head clearance 77"

HEAVY DUTY ALUMINUM COLLECTION

ILLUMISHADE™ SOLAR FEATURES



Solar Element Specifications:

- 35% higher capacity than traditional rechargeable batteries**
- High-output solar panel**
- Auto-on / Auto-off**
- 3-year Limited Warranty**
- 32 LEDs with 10,000 hour lifespan**
- Batteries can run 4 night-cycles without sun**



HEAVY DUTY ALUMINUM COLLECTION

ILLUMISHADE™ SOLAR

EC854MAC-L

Commercial Umbrellas



Base is sold separately

Product No.:

EC854MAC-L

Other Sizes:

EC845MAC-L (7½' octagon)



Frame is in
silver only

Specifications:

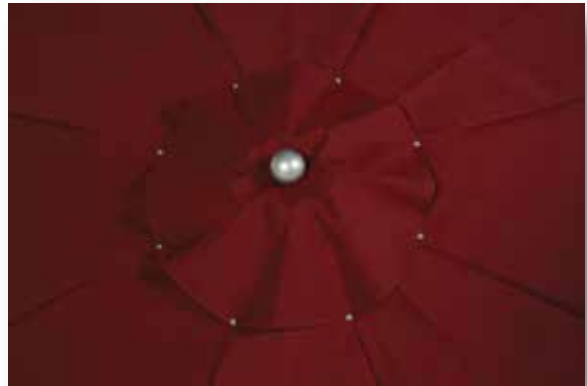
Size	9'
Ribs	8, 1/8" Thick Square Aluminum Ribs
Shape	Octagon
Pole thickness	1/8" Thick Pole
Pole Dia	1.5"
Tilt	None
Bottom pole	34"
Lift	Double Pulley Lift
Weight	33 lbs.
Height	92" / Head clearance 81"

HEAVY DUTY ALUMINUM COLLECTION

HEAVY DUTY FEATURES



Rib Pocket



Round Aluminum Finial



1/8" Thick Square Aluminum Ribs



Rib Joint



Double Pulley System

HEAVY DUTY ALUMINUM COLLECTION

EC845MAC

Commercial Umbrellas



Base is sold separately

Product No.:
EC845MAC



Frame is in
silver only

Specifications:

Size	7½'
Ribs	8, 1/8" Thick Square Aluminum Ribs
Shape	Octagon
Pole thickness	1/8" Thick Pole
Pole Dia	1.5"
Tilt	None
Bottom pole	34"
Lift	Double Pulley Lift
Weight	23 lbs.
Height	92" / Head clearance 71"

HEAVY DUTY ALUMINUM COLLECTION

EC854MAC

Commercial Umbrellas



Base is sold separately

Product No.:
EC854MAC



Frame is in
silver only

Other Sizes:
EC866MAC (11' octagon)

Specifications:

Size	9'
Ribs	8, 1/8" Thick Square Aluminum Ribs
Shape	Octagon
Pole thickness	1/8" Thick Pole
Pole Dia	1.5"
Tilt	None
Bottom pole	34"
Lift	Double Pulley Lift
Weight	33 lbs.
Height	92" / Head clearance 81"

HEAVY DUTY ALUMINUM COLLECTION

EC854MACSQU

Commercial Umbrellas



Base is sold separately

Product No.:
EC854MAC-SQU



Frame is in
silver only

Other Sizes:
EC845MAC-SQU (5½' Square)
EC866MAC-SQU (7½' Square)

Specifications:	
Size	6½'
Ribs	4, 1/8" Thick Square Aluminum Ribs
Shape	Square
Pole thickness	1/8" Thick Pole
Pole Dia	1.5"
Tilt	None
Bottom pole	34"
Lift	Double Pulley Lift
Weight	33 lbs.
Height	92" / Head clearance 81"

WOODEN COLLECTION

WOOD FEATURES



Pulley System



Wooden Round Finial



End Pockets



Brass Connector

WOODEN COLLECTION

BJ75

Commercial Umbrellas



Base is sold separately

Product No.:
BJ75

Specifications:

Size	7 1/2'
Ribs	8, 3/4" solid wood
Shape	Octagon
Frame	Solid Ramen Wood
Pole Dia	1.5"
Bottom pole	34"
Lift	Single Pulley / Brass pin
Tilt	None
Weight	22 lbs.
Height	92" / Head clearance 71"

WOODEN COLLECTION

BJ1006

Commercial Umbrellas



Base is sold separately

Product No.:
BJ1006

Specifications:

Size	9'
Ribs	8, 3/4" solid wood
Shape	Octagon
Frame	Solid Ramen Wood
Pole Dia	1.5"
Bottom pole	34"
Lift	Double Pulley / Brass pin
Tilt	None
Weight	32 lbs.
Height	98" / Head clearance 73"

WOODEN COLLECTION

BJ1011

Commercial Umbrellas



Base is sold separately

Product No.:
BJ1011

Specifications:

Size	11'
Ribs	8, 3/4" solid wood
Shape	Octagon
Frame	Solid Ramen Wood
Pole Dia	2", One piece center pole
Lift	Double Pulley / Brass pin
Tilt	None
Weight	47 lbs.
Height	102" / Head clearance 77"

WOODEN COLLECTION

BJ1006-SQU

Commercial Umbrellas



Base is sold separately

Product No.:
BJ1006-SQU

Other Sizes:
BJ75-SQU (5½ft x 4 rib square - 7½ft diagonal)
BJ1011-SQU (7½ft x 4 rib square 11ft diagonal)

Specifications:

Size	6½'
Ribs	4, ¾" solid wood
Shape	Square
Frame	Solid Ramen Wood
Pole Dia	1.5"
Bottom pole	34"
Lift	Double Pulley / Brass pin
Tilt	None
Weight	32 lbs.
Height	98" / Head clearance 73"




COMMERCIAL CANTILEVER

orion

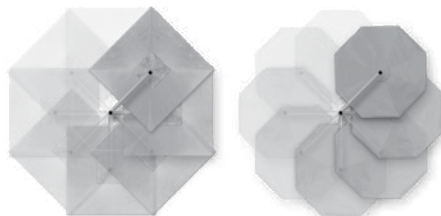
Our best-selling sidepost style rotates 360° and is the ideal solution for most commercial applications.

Use of the Mount Kits provide substantial cost savings and creates the preferred small footprint.

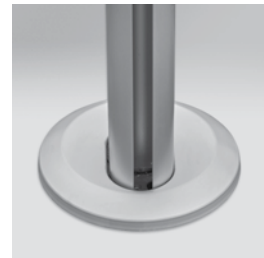
Features:

- Durable high performance hub and fittings
- High-grade stainless steel cable
- Simple to operate crank lift system
-  - Removable crank handle
-  - (8) 45° locking rotating positions
- Built-in light adapter
- Internal mast stem
-  - Optional internal mast stem cover (included)
- Protective cover (included)

– Visit www.shademakerusa.com for more product information –



360° rotation



optional internal
mast stem cover

WIND DAMAGE IS NOT COVERED UNDER OUR LIMITED WARRANTY.

COMMERCIAL CANTILEVER



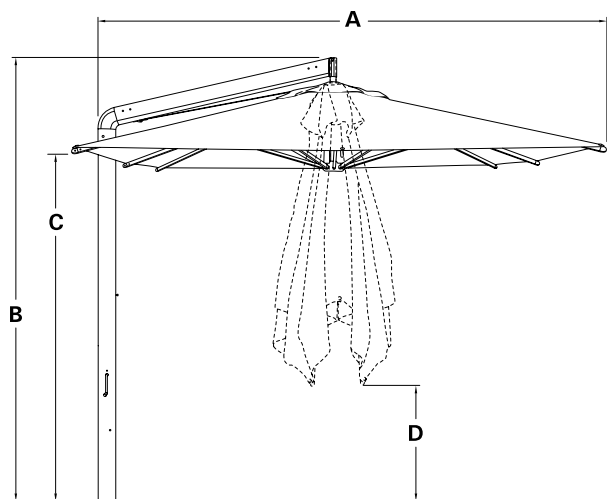
Mast Type: 2.75" x 4.375" Oval - Sidepost

Wall Thickness: .051" Arms
.125" Mast

Applications: Commercial

Finish: Silver Shadow

Canopy structure easily detaches for storage



Item No.	A Canopy to Mast Width	B Total Height	C Height to Arm	D Canopy Clearance Closed
OR-30S	10' 6"	9' 7"	6' 11"	1' 9"
OR-30	9' 4"	8' 11"	7'	3' 6"
OR-35	11' 4"	9' 4"	7' 4"	2' 9"
OR-40	12' 3"	9' 10"	7' 4"	2' 6"

Item No.	Size		Canopy Shape	Coverage	Ribs	Min. Base Weight*
	meters	feet				
OR-30S	3.0m	9' 9"	Square	95 sq. ft.	8	350 lbs.
OR-30	3.0m	9' 9"	Octagon	75 sq. ft.	8	350 lbs.
OR-35	3.5m	11' 5"	Octagon	103 sq. ft.	8	450 lbs.
OR-40	4.0m	13' 1"	Octagon	134 sq. ft.	8	500 lbs.

* NOTE: Recommended minimum weight requirements for free-standing applications.

mount kits for astral-tc, orion, polaris and sirius styles



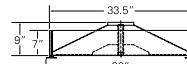
Item No.	Description	Plate Dia.	Thickness	Weight	Cube
MKC17	concrete mount kit	8.5"	.63"	10 lbs.	.05
CASE PACK		CASE WEIGHT		CASE CUBE	
5		51 lbs.		.26	
Item No.	Description	Plate Dia.	Thickness	Weight	Cube
MKG17	in-ground mount kit	6.3"	.38"	12 lbs.	.71
CASE PACK		CASE WEIGHT		CASE CUBE	
2		23 lbs.		1.4	



Stem Dia: 2.38"
Depth: 19.53"

steel base frame

Accommodates 16" stone pavers/weights (sold separately).



Item No.	Weight	Cube
BC05XM	72 lbs.	5.55

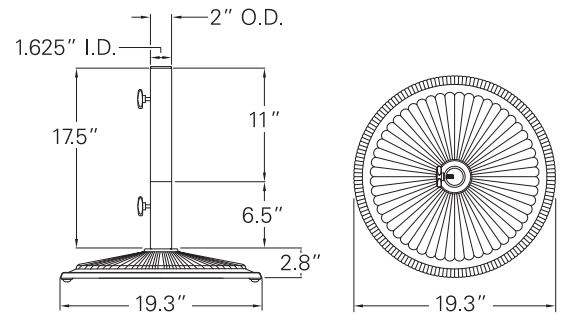
NOTE: SM PLATE (Adapter Plate) NOT REQUIRED

Stone pavers/weights not available through East Coast Umbrella

Bases



T500
Split Neck
50 lb. Cast Iron Base
Black, White, and Silver



Add-on Weight (30 lbs.) available



EC55
50lb Base 1 9\"/>

FB
50LB/ 18\"/>

FB-PLT Platinum

FB- SND Sand

FB-BLK Black

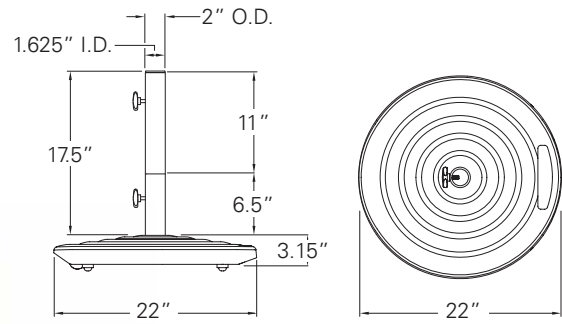
FB-WH White



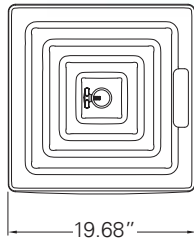
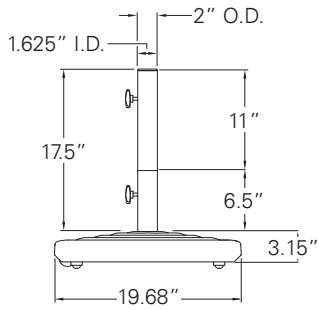
Bases



BKM1009 SQU
100 lb. Cast Aluminum Base
with Wheels & Handle
Square
Black



BKM1009
100 lb. Cast Aluminum Base
with Wheels & Handle
Round
Black



FUB80BZ



FUB80BLK



FUB80
80 lb. Plastic Concrete filled
Black, Bronze
Base Height is 14.5"
Base Diameter is 20.5"
Neck/Stem Diameter is 1½" - 2"

FUB80BZ- Bronze
FUB80BLK- Black
FUB80WH- White

Bases



Industrial-grade baseplate and neck.
Will fit any 1.5 inch diameter pole.
Attractive and protective powder-coated black or white finish.
Can be bolted to any level solid wood or level concrete surface.
Installation required. Installation hardware not included.

Specifications
Product number:
BASEPLATE-SQU-BLK
BASEPLATE-SQU-WHT
Plate size: 7.75 in. Square
Height: 17.75 in.
Weight: 6 lb.
Tube inner diameter: 1.5 in.



Specifications
Product number:
BASEPLATE-RND-BLK
BASEPLATE-RND-WHT
Plate size: 7.75 in. Square
Height: 17.75 in.
Weight: 6 lb.
Tube inner diameter: 1.5 in.



"HAMMERHEAD" Beach Umbrella Anchor



- Featured in Casual Living Magazine as the "Top New Beach Accessory" for 2013
- For sand use only!
 - Pile-drive action provides the easiest & strongest hold of any beach umbrella anchor available.
(NO MORE FLYING UMBRELLAS)
 - Installs with one hand in less than 30 seconds by both men and women of all ages.
 - Stabilizing fins provide superior hold in all sand.
 - Reel notch in top secures medium size fishing rods up to 1-1/2" diameter.
 - Built in 2 lb. carbon steel drive-weight with durable powdercoat finish.
 - Large nylon wing screw secures umbrella in place.
 - Built-in locktab secures drive-weight when not in use.
 - Holds umbrella poles from 1-1/8" to 1-1/2" diameter.
 - Dimensions - 27" x 3-3/8".
 - Weight 3 lbs.
 - ALSO DOUBLES AS THE PERFECT SURF ROD ANCHOR FOR STANDARD SIZE FISHING RODS

Logos For Any Umbrella



One color logos
on the panel



Multi colored logos
on the panel



Multi colored logos
on the panel
and the valance



One color logo
on the valance



Extra Large (upcharge)
multi colored logos
on the panel



Full Panel
Digital Print

Other Services Available:

***Banners *Signs *Custom Printing *Decals
*Magnets *Graphic Design *Posters**

AND Much More! Just give us a call!

Logos For Any Umbrella



Keep your brand exposed for at least 3 times as long with these high-quality, American-made umbrellas.

cafés // hotels // resorts // trade shows // sidewalk sales



Good-looking and high-quality umbrella will still be shading customers when those flimsy imports have buckled and blown away.



High-quality umbrella will last through several seasons after cheaper models have folded up for good.

Umbrella & Fabric Warranty

Our umbrellas are covered by a 3 YEAR WARRANTY from defects on original materials and workmanship.

Includes: Frame, ribs, finial, tilt, crank handle, housing, canopy and rib pocket seams. If a defect in the original material or workmanship appears during the warranty period we will repair or replace the product without charge.

Fabric Guarantees:

Acrylic fabric comes with a limited warranty that covers against fading, dry rot, and shrinkage. These warranties do not cover labor in installation supplied by the dealer.

OUTDURA:

Outdura 9.25oz. awning (marine) grade fabrics are 100% solution dyed acrylic and are backed by Outdura's 6 year limited warranty.

Outdura 8oz furniture grade fabrics are 100% solution dyed acrylic and are backed by Outdura's 5 year limited warranty.

SUNBRELLA:

Sunbrella 9.25oz awning (marine) grade fabrics are 100% solution dyed acrylic and are backed by Sunbrella's 10 year limited warranty.

Sunbrella 8oz furniture grade fabrics are 100% solution dyed acrylic and are backed by Sunbrella's 6 year limited warranty.

What Is NOT Covered:

Damage caused by misuse, neglect, vandalism, lack of maintenance, or acts of nature (including but not limited to wind, hurricanes, tornadoes, storms and exposure to animals) are not covered by this warranty. If the umbrella is found to be warranted, then the manufacturer will pay for the return shipping. If the umbrellas are not warranted, then the customer will be billed for the repairs and any shipping charges.

Wind Damage:

Umbrellas should not be left unattended while open, especially during windy conditions. We highly recommend that all umbrellas are secured with a sufficiently weighted base with tightening screws. During windy conditions umbrellas should be closed, removed from their base, and stored, or laid horizontally. This will reduce the risk of damage to your umbrella, furniture, and other belongings or property.

WIND DAMAGE IS NOT COVERED UNDER OUR LIMITED WARRANTY.

Goods Damaged During Shipment:

Customers are expected to open and inspect each item for any damage that may have occurred during shipment and notify the manufacturer immediately within 3 days in order for a claim to be filed with the carrier. The manufacturer is not responsible for ANY damages or loss caused by the carrier. Once we are notified of damage or loss, the manufacturer will file a claim and issue a replacement to you.

Any warranty claim will be subject to review by the manufacturer. The customer will be responsible for shipping to the manufacturer for inspection and repair.

Call Tags & RA's:

The manufacturer will repair or replace frames for wind-damaged umbrellas for our customers. It will be the customers responsibility to pay for the repairs or replacement frames and freight both to and from the manufacturer.

Return Policy:

The manufacturer has a 30 day return policy effective from the date of delivery. There is a 30% restocking fee on ALL returned orders. NO EXCEPTIONS

Stock Fabrics

 O-6009 NATURAL	PMS # Warm Grey 1C  O-6034 SAND	PMS # 7502  O-6020 KHAKI	PMS # 7502  O-6006 ANTIQUE BEIGE
PMS # 468  O-6025 LINEN	 SA-2838 INTEGRAL	PMS # 7503  O-6050 STONE	 O-6032 DESERT BEIGE
PMS # 9C  O-6026 TAUPE	PMS # 4625  O-6056 KONA	PMS # 5C  O-6008 CADET GREY	PMS # 429  R-123 ARGENTA GREY
PMS # 10C  O-6061 STORM GREY	PMS # 6C  O-6005 BLACK	PMS # 3435  O-6001 FOREST GREEN	PMS # 329  R-142 EMERALD
PMS # 368  SA-2024 ANIS	PMS # 321  O-6016 OZ GREEN	PMS # 2219  O-6072 ARUBA	PMS # 7459  O-6064 CARIBBEAN BLUE

*Visual PMS matches are listed in RED

Stock Fabrics

PMS # 2915



SA-2066 CELESTE

PMS # 7454



O-6051 ISLAND BLUE

PMS # 2129



O-6067 BEACH BLUE

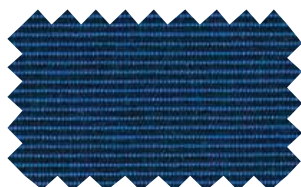
PMS # 2945



O-6002 PACIFIC BLUE



O-6074 MED. TWEED



O-6014 CATALINA BLUE

PMS # 647



O-6039 STEEL BLUE

PMS # 2767



O-6041 CLASSIC ROYAL

PMS # 296



O-6022 ROYAL NAVY

PMS # 5395



6003- CAPTAIN'S NAVY

PMS # 2112



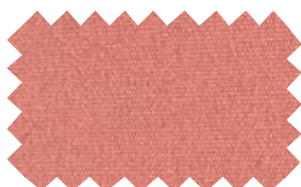
O-6046 PURPLE HAZE

PMS # 7433



O-6063 HIBISCUS

PMS # 2339



O-6045 CORAL

PMS # 165



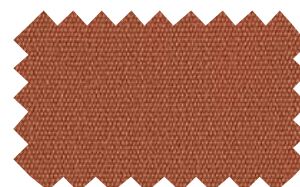
R-567 ORANGE

PMS # 7417



O-6062 TANGERINE

PMS # 167



O-6049 POTTERY

PMS # 484



O-6035 TERRACOTTA

PMS # 7627



O-6021 CARDINAL RED

PMS # 7427



O-6010 CHINA RED

PMS # 504



O-6004 BURGUNDY

PMS # 142



SA-2013 AMARILLO

*Visual PMS matches are listed in RED