

TEXTILENE
SUNSURE[®]
BRAND FABRIC



SLINGS.
UMBRELLAS.
SHADE SAILS.

Textilene[®] Sunsurre[®] is a specially formulated high strength fabric built to withstand fading, mildew, soiling and wear and tear. SUNSURE[®] has up to a 92% shade factor making it the right choice for several outdoor applications. It is specially designed to remain vibrant and colorful for years even through continuous outdoor exposure and under the most severe weather conditions.



*Custom colors and widths available.
Minimum order of 1000 yards. Upcharges may apply.** Available in 60 linear yard rolls.

4031 Ross Clark Circle NW, Dothan, Alabama 36303
1.800.633.7550 Fax: 334.673.4126
www.twitchellcorp.com

Specifications

REACH Compliant - Regulated by Registration, Evaluation, Authorization and Restriction of Chemicals. REACH places greater responsibility on industry to manage the risks that chemicals may pose to human health and the environment.

Fire Classification - Passes California U.S. Title 19 (small scale), NFPA701-2015 TM#1 (small scale), NFPA 101 (Class A Rating), UBC (Class 1), BS 5867 2008 Part 2 Type B Performance, NFPA 701 TM #2 (large scale), and CAN/ULC-S 109-03 (large and small scale).

Bacteria and Fungal Resistance - Passes ASTM E 2180, ASTM G21. Includes specially formulated antimicrobial.

RoHS Compliant - Free of Lead (Pb), Cadmium (Cd), Mercury (Hg), Hexavalent chromium (Hex-Cr), Polybrominated biphenyls (PBB), and Polybrominated diphenyl ethers (PBDE).

Children's Toy Act - Does not contain harmful phthalates listed under Section 108 of the Consumer Product Safety Improvement Act of 2008 (CPSIA).

Environmental Certification - GREENGUARD gold certified. Acceptable for use in environments such as schools and healthcare facilities. Complies with requirements of the State of California's Department of Public Health "Standard Method for Testing and Evaluation of Volatile Organic Chemical Emissions from Indoor Sources Using Environmental Chambers, Version 1.1 (2010)" (also known as California Section 01350).

Warranty - Twitchell Technical Products, LLC produces durable, all weather fabrics that are unmatched for quality and durability. Sunsurre[®] brand fabrics are covered by a 15-year limited warranty for fixed & operable shading applications and 3-year limited warranty for all other end uses from the original date of purchase.

Technical Data

Item Number: T91NCS, T91NCT, T91HCT, T91N5W
Product Description: A fabric using .018" diameter vinyl coated 500 denier polyester core yarns in the warp and .025" diameter vinyl-coated 1000 denier polyester core yarn in the fill.

Attribute	ASTM	Warp	Fill	Typical
Construction, end/inch	D3775	38.0 ±0.5	12.0 ±0.5	
Weight, oz/yd ²	D3776-09	-	-	15.0
Weight, g/m ²	D3776-09	-	-	508.65
Tensile Strength (grab), lbf / kgf	D5034-09	559.1 / 253.6	354.8 / 160.9	
Tensile Strength (strip), lbf / kgf	D5035-11	283.0 / 128.4	165.4 / 75.0	
Tear Strength (trapezoidal), lbf / kgf	D5733	101.8 / 46.2	65.6 / 29.8	
Elongation, %	D5035-95	27.3	25.4	
Abrasion Resistance <small>(CS10/500 cycles/ with no added weight)</small>	D3884-09		No Exposure of Core Yarn	
Flammability Rating			CS191-53 & CA117E	
Weatherability, 1200 hours	G154		Trace Discoloration	
Mildew Resistance	G21-13		No Growth	
Thickness, inches/mm				0.033" / 0.838mm

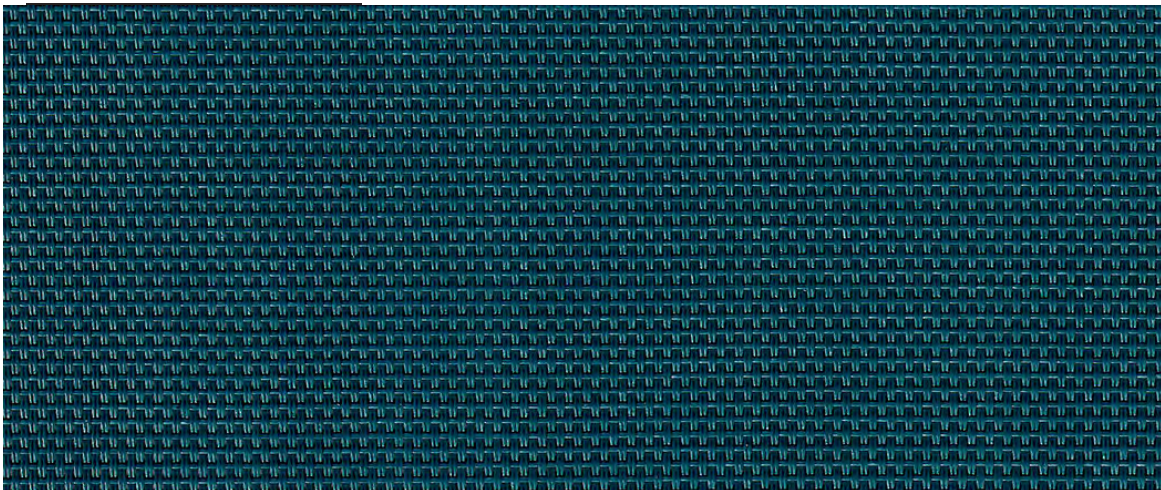
The above results are a representation of real data from single test samples. Presently no specification is incorporated.

SUNSURE [®] Shade Factor				
Profile Angle	Transmittance	Reflectance	Absorption	Shade Factor
0	0.12	0.51	0.37	91
30	0.12	0.53	0.35	-
45	0.11	0.54	0.35	-
75	0.08	0.63	0.29	-

Color is the key factor when selecting a TEXTILENE[®] SUNSURE[®] fabric for awning or shade applications. Light colors are more reflective with a lower heat gain, and are more difficult to see through. Darker colors provide better daytime visibility. These colors absorb light and heat while transmitting less light and having lower surface brilliance. Twitchell's specially designed TEXTILENE[®] SUNSURE[®] fabric can create an ideal balance between unique high quality looks and the proper amount of shade.

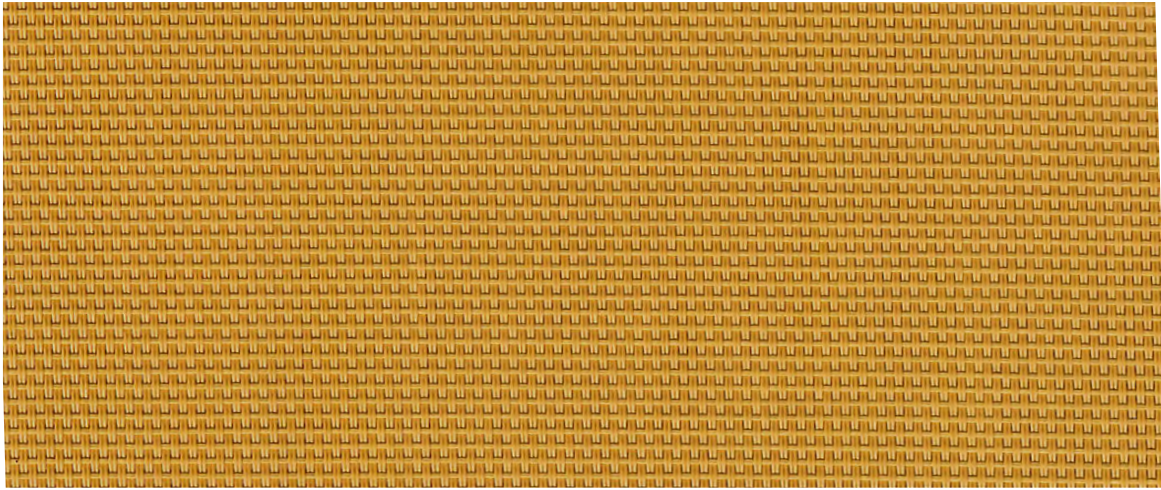


New Stock Additions.



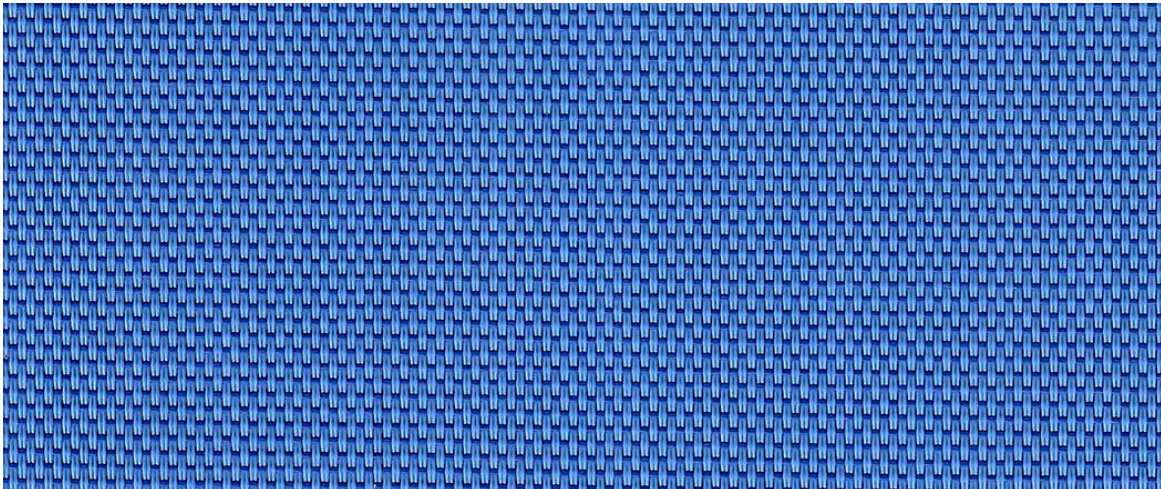
Deep Twilight

T91NCS307 x 54"



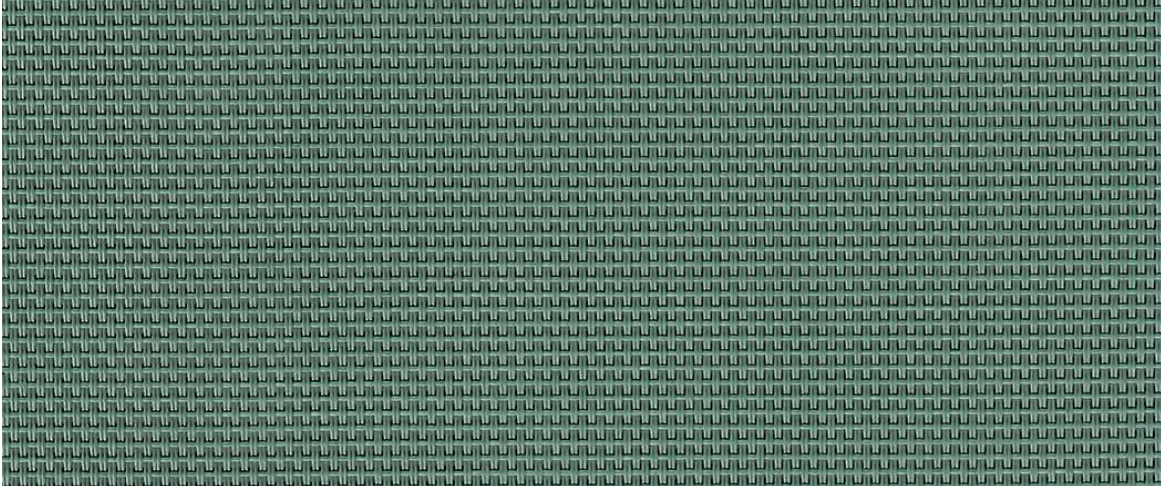
Curry

T91NCS306 x 54"



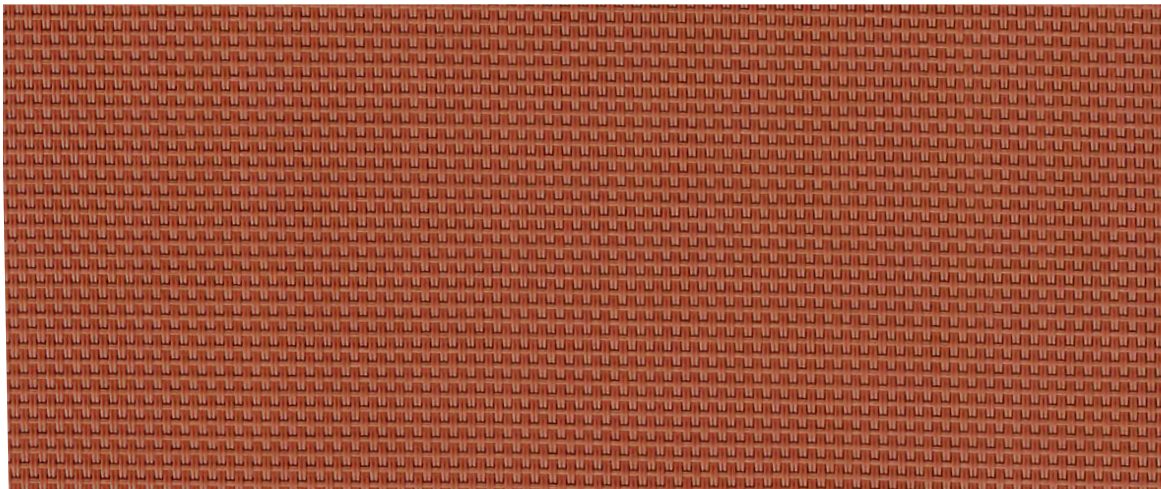
Periwinkle

T91NCT051 x 54"



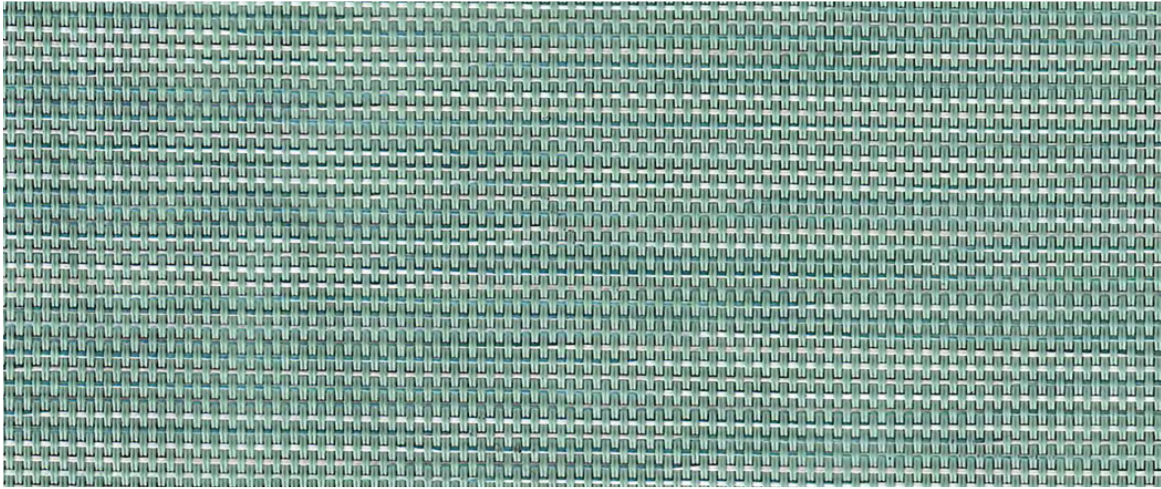
Sage Blue

T91NCS308 x 54"



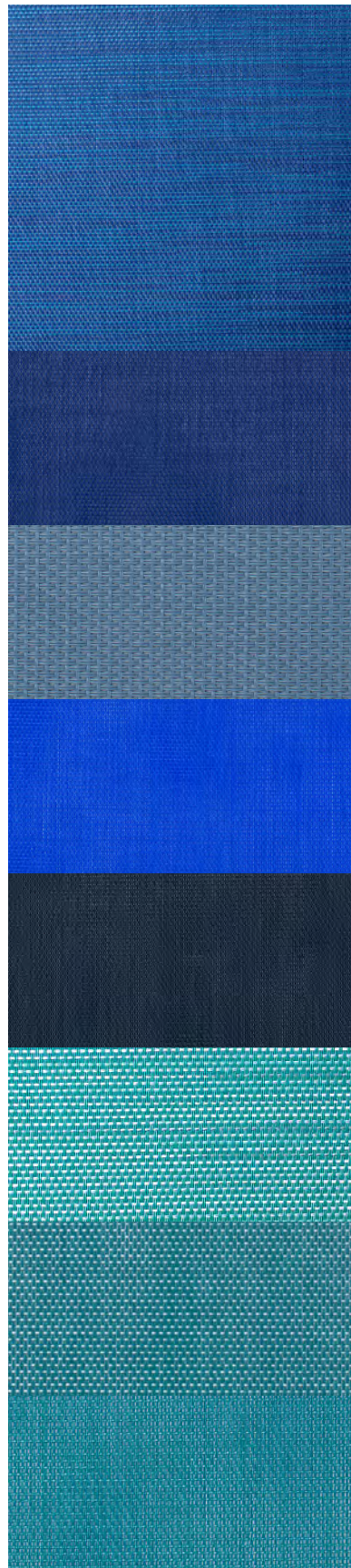
Spice

T91NCT050 x 54"



Seascape

T91HCT045 x 54"



Azure
T91HCT038 x 54"

Sea Isle Blue
T91NCT003 x 54"

Suncast
T91NCS003 x 54"

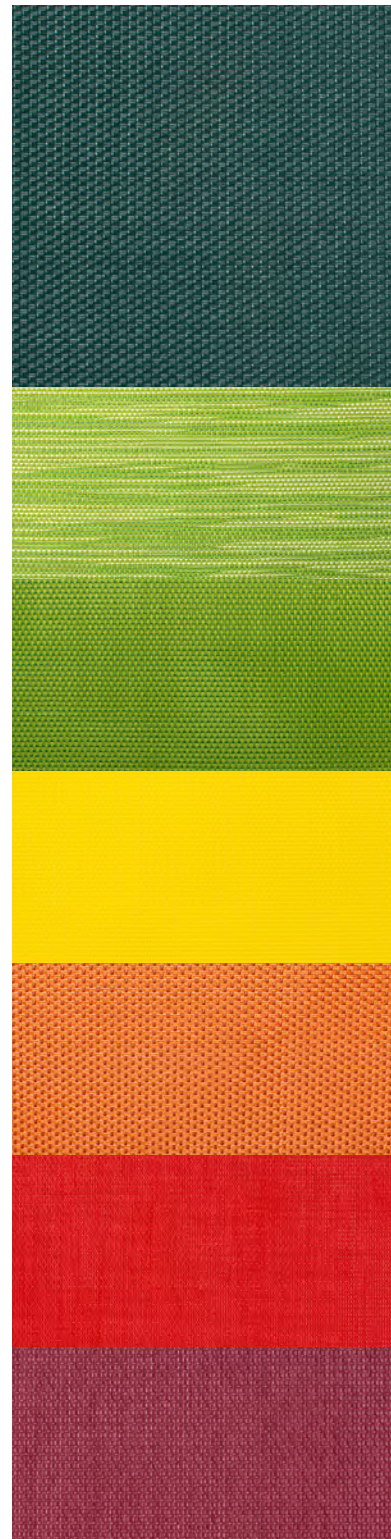
Royal Blue
T91NCS004 x 54"

Dark Blue
T91NCS002 x 54"

Teal Crush
T91HCT037 x 54"

Jade
T91NCT020 x 54"

Mayan Teal
T91NCS025 x 54"



Forest Green
T91NCS012 x 54"

Greenlake
T91HCT036 x 54"

Limelight
T91NCT045 x 54"

Yellow
T91NCS172 x 54"

Orange Envy
T91NCT044 x 54"

Red
T91NCS059 x 54"

Maroon
T91NCS057 x 54"



Birch Forest
T91HCT008 x 54"

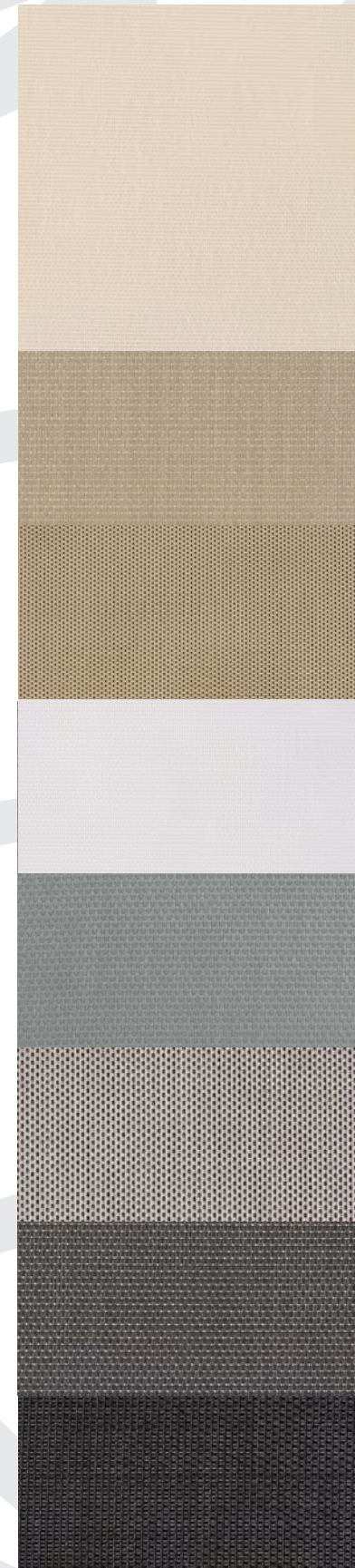
Natural Linen
T91HCT001 x 54"

Honey
T91HCT024 x 54"

Autumn Fern
T91HCT010 x 54"

Meridian
T91HCT023 x 54"

Sierra Sands
T91HCT009 x 54"



Alabaster
T91NCS013 x 54"

Taupe
T91NCS065 x 54"

Winter Wheat
T91NCT027 x 54"

White
T91NCS011 x 54"

Dove Grey
T91NCS008 x 54"

Dense Titanium
T91N5W100 x 54"

Ninja
T91NCT023 x 54"

Black
T91NCS029 x 54"