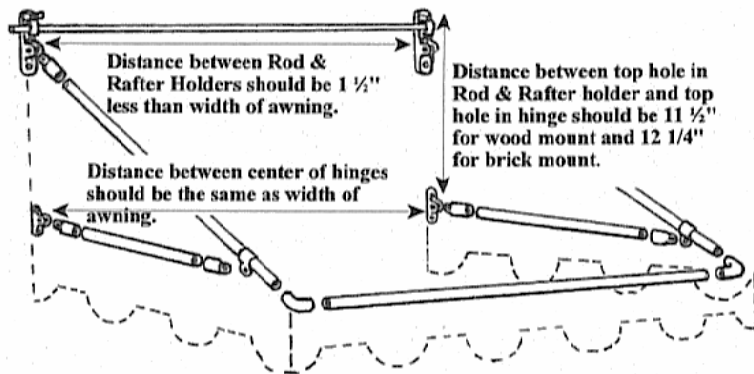
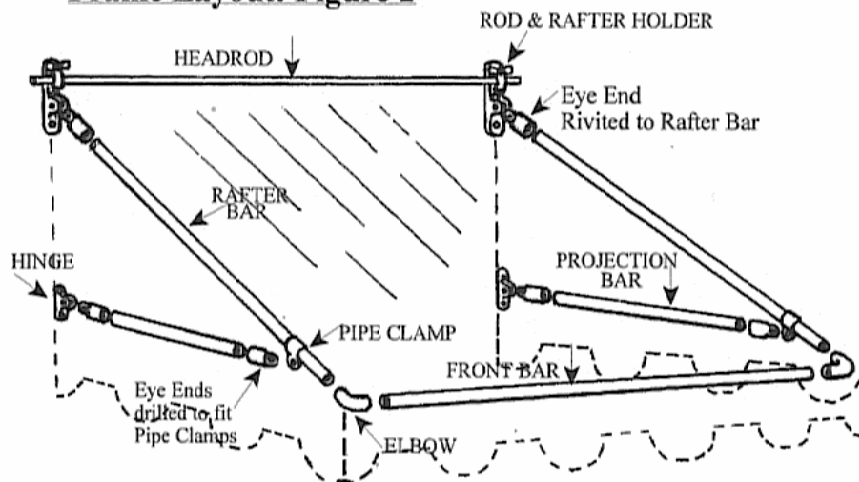


**Fitting Layout: Figure 1**



**Frame Layout: Figure 2**



# PYC DOOR AWNINGS

## *Installation & Product Guide*

For awnings 71" wide & under

1111 Talbot St.  
St., Michaels, MD 21663  
800-933-6936  
410-822-9302  
Fax 410-745-2920  
[www.pycawnings.com](http://www.pycawnings.com)

Thank you for your PYC Awning purchase.  
If you have any questions about installation  
or would like to place an order for additional  
awnings, please call us Toll-Free at  
1-800-933-6936

**Center All Fittings With Door**  
Awnings over 90" wide will have front bar and  
headrod shipped in two pieces.  
Use couplings provided to make into one length.

**READ COMPLETE INSTRUCTIONS BEFORE INSTALLING**

**Wood Mounting:**

- ◆ *Rod & Rafter holders* **must** be mounted to wall stud, door header or framing of structure. This is very important because *Rod & Rafter holders* support the entire weight of the awning, and support it during snow, wind and rain.
- ◆ *Rod & Rafter holders*: Use top and bottom screw holes only for wood mounting, and same fitting layout, Figure 1
- ◆ If no framing member, stud, header, etc. are accessible, wall anchors may be used and are available at most hardware stores. You should consult with a professional carpenter or contractor for the correct type of anchor you will need. All structures are different.

**Brick or Block Mounting:**

- ◆ *Rod & Rafter holders*: Use center screw hole only for brick mounting, and same fitting layout, Figure 1
- ◆ Again, Wall anchors are available at most hardware stores. You should consult with a professional carpenter or contractor for the correct type you will need. All structures are different.

1. Find center of door and measure off center for Rod & Rafter Holders on each end of awning.
2. Mount Rod & Rafter Holders 13 ½" above door. (actual door not trim) May be mounted further up if there is room, up to 18" is okay. Distance between Rod & Rafter Holders should be 1 ½" less than awning width.

3. Measure off center of door for hinge location  
The distance between hinges should be same as awning.

4. Mount hinges 11 ½" below top hole in Rod and Rafter Holders for wood mounting, and 12 1/4" for brick mounting. Distance between hinges from center to center should be same as width of awning.

5. Slide pipe clamp on End Rafter bars - bolt eye end (drilled to fit pipe clamp) to pipe clamp. Head of bolt should be facing outside of awning and the nut on the inside of awning, to prevent chafing. Also set screw on eye end should be facing inside for final adjusting and to prevent chafing.

7. Slide front bar into front bar pocket  
- be careful ends of pipe may be sharp.

8. Slide 2 eye ends onto projection bar (drilled for pipe clamp bolt on one end). Then attach to hinge and clamp on rafter bar - then level by sliding clamp on projection bar. Then tighten clamp.

**Very Important! Recheck all screws and set screws and tighten.**

Awning must withstand mother nature. Tighten all screws and set screws. Also double check that no bolts or set screws are chafing fabric. They will rub holes in it if backwards.

We recommend using "Loctite" on all screws and set screws to prevent them from loosening or backing out. You can purchase "Loctite" at your local hardware store.

Remove snow and rainwater should it accumulate. Brush off awning with broom and spray with hose occasionally to keep awning clean.

**TOOLS NEEDED:**

- DRILL OR DRILL DRIVER
- TAPE MEASURE
- SCREWDRIVER
- (PHILLIPS & STRAIGHT)
- 1/8" HEX-SOCKET OR 1/8" ALLEN
- 1/2" OR ADJUSTABLE WRENCH
- LEVEL
- PLIERS

- ADDITIONAL TOOLS FOR BRICK MOUNTED AWNINGS:**
- 1/2" MASONRY DRILL BIT

**Hardware**

