

Window Awning Installation Instructions

Installation Instructions

1. Mount headrod clamps at desired height above window 3" in from each side of awning width. Mount level with window.
 - **Headrod Clamps must be mounted to wall studs, window header or framing structure as they support the entire weight of the awning.**
2. Slip on the ring pulleys on the inside hook of each headrod clamp.
3. Measure down from bottom of hook on headrod clamp for center of hinge mount. Measurement should be equal to projection of awning plus ½".
4. Mount hinges centering over measurement. Distance between centers of hinges should same as awning width or within 1" of awning width.
5. Slide headrod in headrod pocket of awning. Loosen wing nuts on headrod clamp. Insert onto headrod clamp over fabric pocket. Tighten wing nuts.
6. Slip in front bar through pocket on awning. Slip on elbows & tighten set screws. Screws should be facing down.
7. Slip projection bars through projection bar pocket on awning, attach to elbow. Slip on eye end, tighten set screws. Mount eye on end of hinge. Repeat for other side.
8. Mount tie off cleat below hinge where desired.
9. Tie rope around front bar at each end and through any pocket opening, using a slip knot. (Awnings 72" wide or more will have pocket openings for rope) Run rope through ring pulley down to cleat. Cut to desired length. Repeat through each pocket opening running rope through each ring to cleat.
10. Adjust elbows with set screws so awning and pipe hang level.
 1. Awning must be mounted on same plane and flat surface to keep awning level.
 2. We recommend using "Locktite" on all screws & set screws to prevent them from loosening or backing out. You can purchase "Locktite" from your local hardware store.
 3. Refer to back of this page for Tools needed and special instructions for brick mount and awnings 72" wide or more.

Figure 1

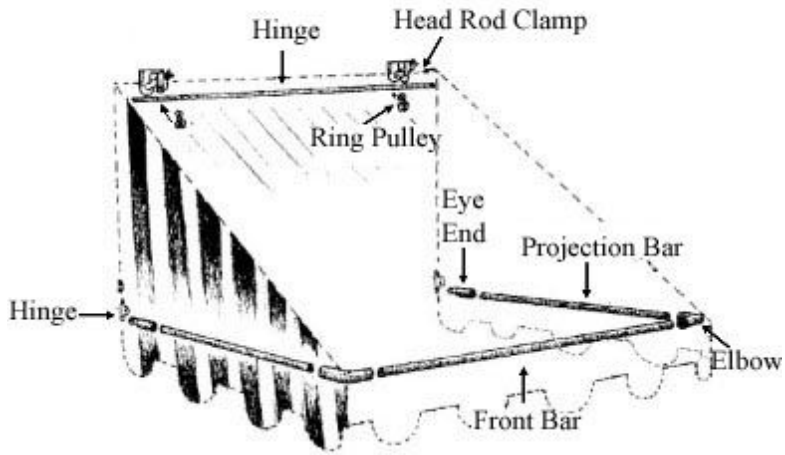
Hardware



Elbow



Eye End



Camel Hinge

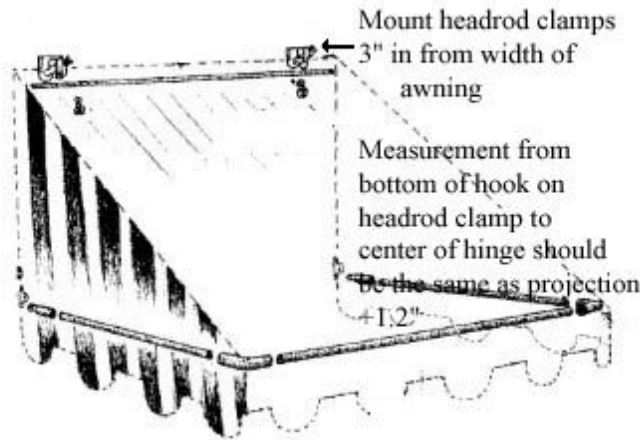


Ring Pulley



Headrod Clamp

Figure 2



Tools Needed

- Drill or Drill Driver
- Tape Measure
- Screwdriver (Phillips & Straight)
- 1/8" Hex-Socket or 1/8" Allen Wrench
- Level

Additional Tools for Brick

- 1/2" Masonry Drill Bit
- 1/2" & 7/8" Wrench or Adjustable Wrench

Special Instructions

All awnings over 95" wide will have headrod and front bar shipped in 2 pieces. They will need to be screwed together. (Ends are threaded)

All awnings 72" wide or more will have 1 or 2 additional headrod clamps. They need to be spaced evenly on headrod, lining up with openings in front bar pocket for retracting rope.

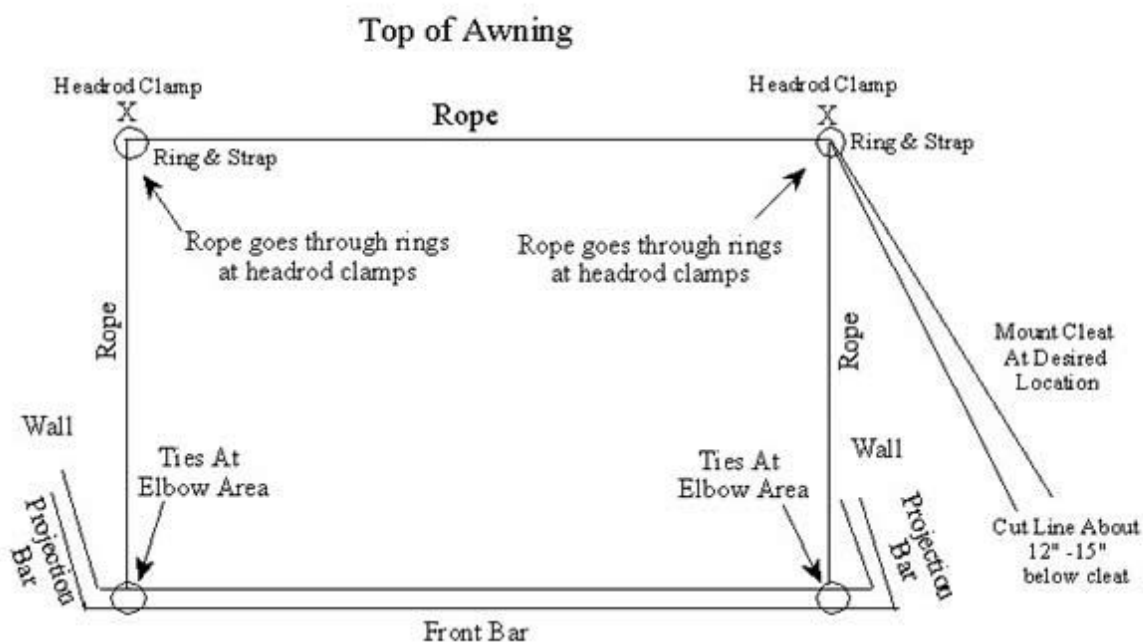
Brick Mount headrod clamps will have one hole. Brick mount hinge will have a screw. Lag Bolts & Lead Anchors are included.

Thank you for your PYC Awning purchase. If you have any questions about installation or would like to place orders for additional awnings, please call us Toll-Free at 1-800-933-6936.

Your awning is made to with stand wind gusts up to 50 mph. if installed correctly. You may want to retract them if winds are to exceed 50 mph. to prevent damage.

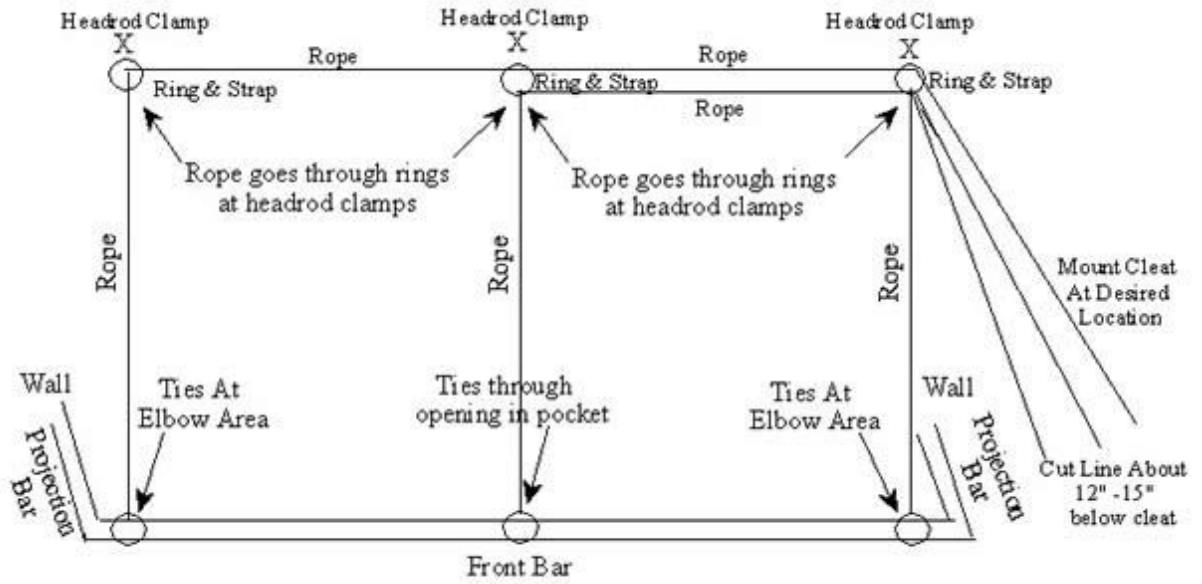
Stringing Instructions

Window Awnings 83" & Under (2 Rings & Straps)



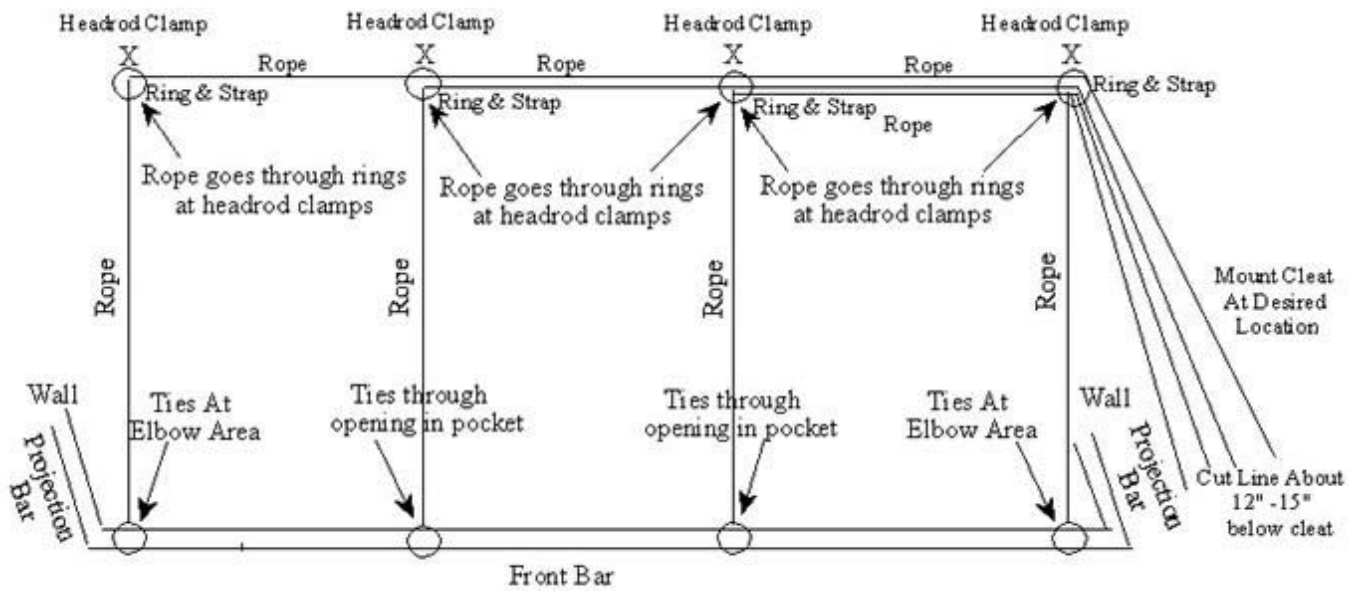
Window Awnings 84" to 108" (3 Rings & Straps)

Top of Awning



Window Awnings 109" to 120" (4 Rings & Pulleys)

Top of Awning



Window Awnings 121" to 180" (5 Rings & Straps)

